

☑ Comply with relevant national and construction industry standards

SUPERTECH BVP-AL

Solid armor, guarding warmth

Solve the loss of efficiency of
traditional vacuum plate breakage
Defects of poor reliability

Supertech-BVP (**B**uilding **V**acuum **P**anel),
Disruptive innovation, high vacuum maintenance,
aging resistance, puncture resistance performance to
the extreme



Supertech-BVP

In view of the requirements of fire prevention, durability and green energy saving in the construction field, Supertech has developed a new vacuum insulation product - BVP: Vacuum Insulation Panel with Stainless Steel Encapsulation (Supertech-BVP).

The special molding process of the hard bottom shell of the product ensures that the corner variability is lower. Vacuum edge banding has no stretch in the two-dimensional plane, the appearance is regular and flat, no folding is required, and the size can be customized according to needs.

No folds, more fidelity

It effectively avoids the hard damage caused to the product in the process, and fundamentally solves the problems of damage and falling off of the traditional building vacuum panel.

Ageing and puncture resistant

The shell has excellent impact resistance, can effectively resist external impact, the material is stable, not easy to age, to ensure long-term use.

Not constrained by morphology

The shape can be customized, the appearance is regular, and the thermal bridge of product assembly is reduced.

Stability meets excellence

The internal vacuum degree is higher, the performance is more stable, and the energy-saving effect is more obvious.

Long service life

The corners are more wear-resistant, reducing air leakage and extending service life.

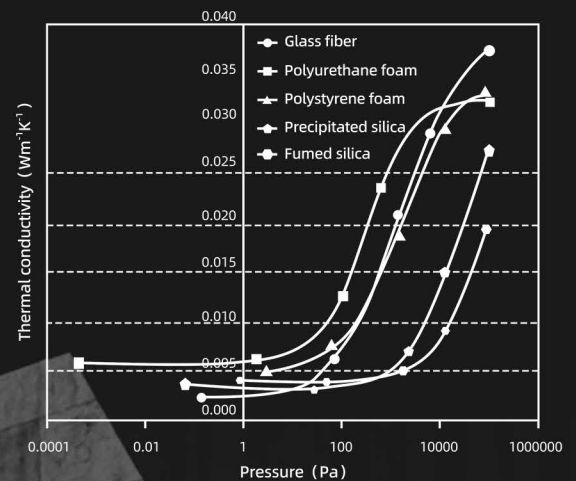


Leakage rate subversion

Supertech-BVP utilizes pre-molded barrier shells with corner deformation control, achieving leakage rates $<3 \times 10^{-9} \text{ Pa} \cdot \text{m}^3/\text{s}$ to enhance product reliability and lifespan.

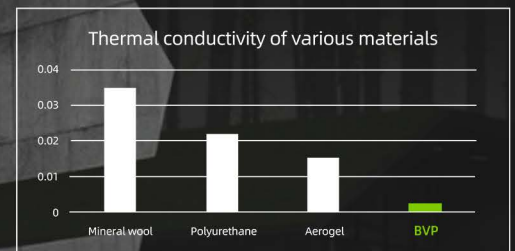
Puncture resistance exceeds **6.2 times** and heat sealing strength surpasses **1.4 times** traditional VIP packaging.

Vacuum Insulation Panel with Stainless Steel Encapsulation (Supertech-BVP) has excellent performance in various tests and has a longer service life. At the same time, it allows greater freedom in its production and use without air leakage.



Class A fireproof, water/moisture resistant

It has good flame retardant performance and is safe and worry-free.



Heat insulation, energy saving

Thermal conductivity $<1/8$ & thermal performance $8 \times$ traditional materials.

Soundproofing and noise reduction for comfort

Porous core material, high vacuum, with good sound insulation and noise reduction effect.

The material is environmentally friendly and durable

It is not easy to decompose, no radiation, green and environmentally friendly, and durable.

New series

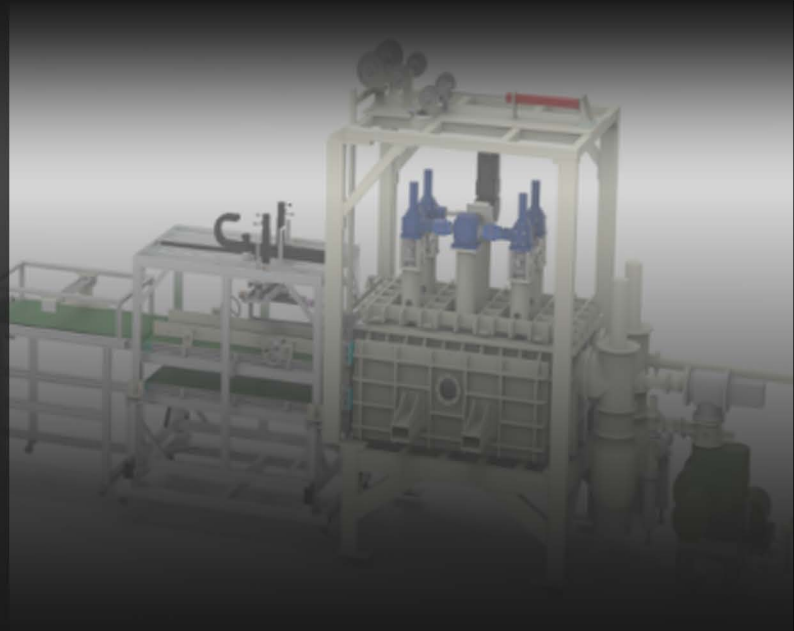
Supertech-BVP	Core material code	Shell code	Film with aluminum (AL the thickness of the finished panel is 10-20mm)
	M Mineral wool Thermal Conductivity: 0.0030 ~ 0.0040 W/m·K		BVP-M·AL
	W Centrifugal cotton Thermal Conductivity: 0.0020 ~ 0.0025 W/m·K		BVP-W·AL

Standard size: 600*800mm, 400*600mm, 300*600mm, 200*400mm

Special-shaped with mounting holes	Custom chamfer & Relief grooves
Slotted with thickened chamfering corners	Round with mounting holes

New Process

More thorough exhaust, orders of magnitude optimized leakage rate, more regular appearance, and higher degree of automation, bring great improvement in reliability.



Green Select

Supertech-BVP can be widely used in the field of ultra-low energy buildings, and is the first choice for energy-saving buildings, which can effectively reduce the thickness of wall insulation and increase room efficiency. Start a new journey of new building insulation and urban renewal.



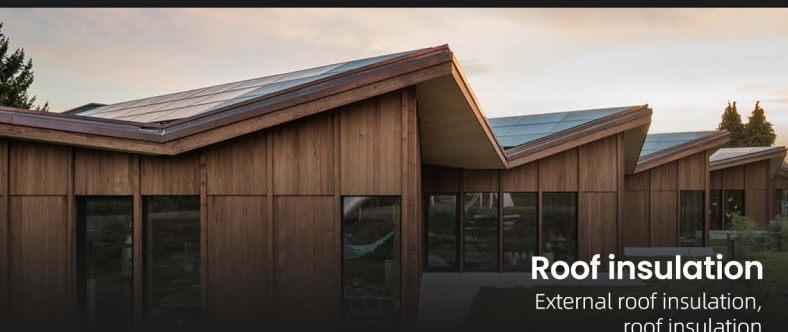
Prefabricated buildings

Prefabricated walls,
prefabricated roof panels



Insulation of traditional buildings

Schools,
public buildings for hospitals



Roof insulation

External roof insulation,
roof insulation



Urban renewal

High-end office buildings,
high-end hotels

Tel: 0592-6199958

Email: market@supertech-vip.com

Web: www.supertech-vip.com

Company address: No. 5, Industrial Second Road, Yaoping Village, Lianfeng Town, Liancheng County, Longyan City, Fujian Province

Company address: No. 1 DuHang East Road, Guankou Town, Jimei District, Xiamen City, Fujian Province



Scan for more updates